

IDEAL Version: ID11_0C_01

IDF

ECO6 id11_0c_01

Format: EcoScope RT Vertical Scale: 1:500

Graphics File Created: 25-Aug-2006 02:15

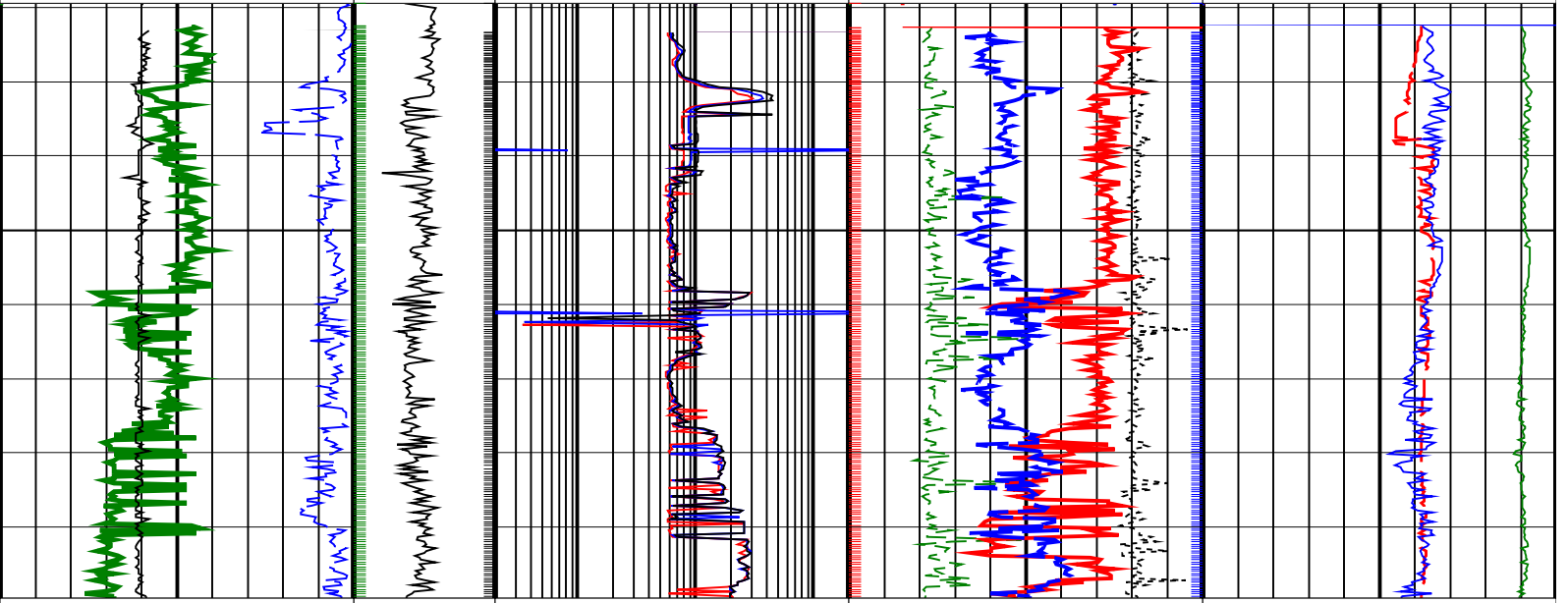
PIP SUMMARY

- └ Density Samples ┘
- └ Gamma Ray Samples
- └ Resistivity Samples
- Neutron Samples ┘

<p>Gamma Ray, Average, Real-Time, Computed Downhole (GRMA_DH_ECO_RT)</p> <p style="text-align: center;">0 (GAPI) 200</p>		<p>Eco Uncorrected Phase Shift Resistivity 40 inch at 2MHz, Real-Time (P40H_UNC_DH_ECO_RT)</p> <p style="text-align: center;">0.2 (OHMM) 200</p>	<p>Thermal Neutron Porosity, Average, Real-Time (TNPH_ECO_RT)</p> <p style="text-align: center;">45 (PU) -15 10 15</p>	<p>Equivalent Circulating Density, Real-Time (ECD_ECO_RT)</p> <p style="text-align: center;">0 (LB/G) 6000</p>
---	--	---	---	---

<p>Ultrasonic Caliper, Average Diameter, Real-Time, Computed Downhole (UCAV_DH_ECO_RT)</p> <p style="text-align: center;">6 (IN) 16</p>		<p>Eco Uncorrected Phase Shift Resistivity 28 inch at 2MHz, Real-Time (P28H_UNC_DH_ECO_RT)</p> <p style="text-align: center;">0.2 (OHMM) 200</p>	<p>Photoelectric Factor, Bottom, Real-Time, Computed Downhole (PEB_DH_ECO_RT)</p> <p style="text-align: center;">0 (----) 10</p>	<p>Bulk Density Correction, Bottom, Real-Time Computed Downhole (DRHB_DH_ECO_RT)</p> <p style="text-align: center;">-0.25 (G/C3) 0.25</p>	<p>Downhole Annulus Pressure, Real Time, Computed Downhole (DHAP_DH_ECO_RT)</p> <p style="text-align: center;">0 (PSI) 6000</p>
--	--	---	---	--	--

<p>ROP*5 (ROP5) (M/HR)</p> <p style="text-align: center;">200 0</p>	<p>MWD Collar RPM (CRPM_RT) (RPM)</p> <p style="text-align: center;">0 400</p>	<p>Eco Uncorrected Phase Shift Resistivity 16 inch at 2MHz, Real-Time (P16H_UNC_DH_ECO_RT)</p> <p style="text-align: center;">0.2 (OHMM) 200</p>	<p>Bulk Density, Bottom, Real-Time, Computed Downhole (ROBB_DH_ECO_RT)</p> <p style="text-align: center;">1.85 (G/C3) 2.85</p>	<p>Downhole Annulus Temperature, Real Time, Computed Downhole (DHAT_DH_ECO_RT)</p> <p style="text-align: center;">0 (DEGC) 200</p>
--	---	---	---	---



<p>ROP*5 (ROP5) (M/HR)</p> <p style="text-align: center;">200 0</p>	<p>MWD Collar RPM (CRPM_RT) (RPM)</p> <p style="text-align: center;">0 400</p>	<p>Eco Uncorrected Phase Shift Resistivity 16 inch at 2MHz, Real-Time (P16H_UNC_DH_ECO_RT)</p> <p style="text-align: center;">0.2 (OHMM) 200</p>	<p>Bulk Density, Bottom, Real-Time, Computed Downhole (ROBB_DH_ECO_RT)</p> <p style="text-align: center;">1.85 (G/C3) 2.85</p>	<p>Downhole Annulus Temperature, Real Time, Computed Downhole (DHAT_DH_ECO_RT)</p> <p style="text-align: center;">0 (DEGC) 200</p>
--	---	---	---	---

<p>Ultrasonic Caliper, Average Diameter, Real-Time, Computed Downhole (UCAV_DH_ECO_RT)</p> <p style="text-align: center;">6 (IN) 16</p>		<p>Eco Uncorrected Phase Shift Resistivity 28 inch at 2MHz, Real-Time (P28H_UNC_DH_ECO_RT)</p> <p style="text-align: center;">0.2 (OHMM) 200</p>	<p>Photoelectric Factor, Bottom, Real-Time, Computed Downhole (PEB_DH_ECO_RT)</p> <p style="text-align: center;">0 (----) 10</p>	<p>Bulk Density Correction, Bottom, Real-Time Computed Downhole (DRHB_DH_ECO_RT)</p> <p style="text-align: center;">-0.25 (G/C3) 0.25</p>	<p>Downhole Annulus Pressure, Real Time, Computed Downhole (DHAP_DH_ECO_RT)</p> <p style="text-align: center;">0 (PSI) 6000</p>
--	--	---	---	--	--

<p>Gamma Ray, Average, Real-Time, Computed Downhole (GRMA_DH_ECO_RT)</p> <p>0 (GAPI) 200</p>		<p>Eco Uncorrected Phase Shift Resistivity 40 inch at 2MHz, Real-Time (P40H_UNC_DH_ECO_RT)</p> <p>0.2 (OHMM) 200</p>	<p>Thermal Neutron Porosity, Average, Real-Time (TNPH_ECO_RT)</p> <p>45 (PU) -15</p>	<p>Equivalent Circulating Density, Real-Time (ECD_ECO_RT)</p> <p>10 (LB/G) 15</p>
---	--	---	---	--

PIP SUMMARY

- Density Samples +
- + Gamma Ray Samples
- + Resistivity Samples
- Neutron Samples +

IDEAL Version: ID11_0C_01
IDF

ECO6 id11_0c_01